

Installation Guide:

Aluminium Fences



Congratulations on purchasing your new aluminium fence. When installed & maintained correctly, your fence should look good for many years to come. Please carefully read this install guide carefully before starting.

This Installation guide has been designed to provide you with the basic steps in installing your fence. As every site is different, the advice in this guide is general in nature and is not designed to be a complete statement of all relevant data.

If you have any questions or need specific advice, you can contact the team on 0800 80 33 26.

- This install guide is not applicable to any fences that are being installed as a balustrade or need to meet specific safety from falling requirements. Please consult Urban Group and your PS1 for specific install details.
- Please discuss your specific site requirements if
 - Your site has sections of land that are sloping
 - Your site is in an extra high wind zone
 - You live near the coast
- Make sure you know the whereabouts of underground electricity, gas or water mains before you begin digging
- Check your local council regulations on boundary fencing
- Ensure you read through this guide completely before you begin to ensure you fully understand the installation process.
- Check the delivered material for the correct number of components and general condition. Note, you must contact us within 7 days if there is any damage so we can raise a freight claim with our transport partners.

01

Tools & Equipment Required

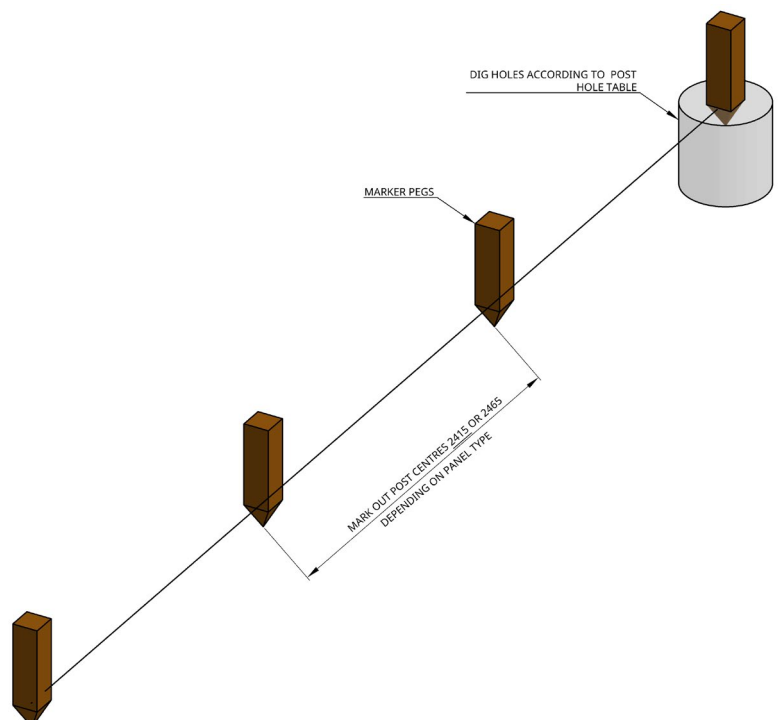
- Tape measure
- String line
- Marker pegs or line marking paint
- Spirit or laser level
- Square
- Drill / impact driver
- Hex / tek screw driver bits
- Masonry drill bits
- Post hole digger / auger
- Concrete or ready mix bags
- Timber bracing
- Saw with aluminium cutting blade
- PPE - boots, gloves, eye/hearing protection

02

Establish Fence Line

1. Place marker pegs at the start and end of the fence line. Add extra pegs at corners or changes in direction.
2. Run a string line from the start peg to the end peg. Keep the line taut and straight with no sag.
3. Mark each post centre along the string line using a marker peg or line marking paint.

Set the string line to the back face of the posts so each post can be aligned consistently during installation.

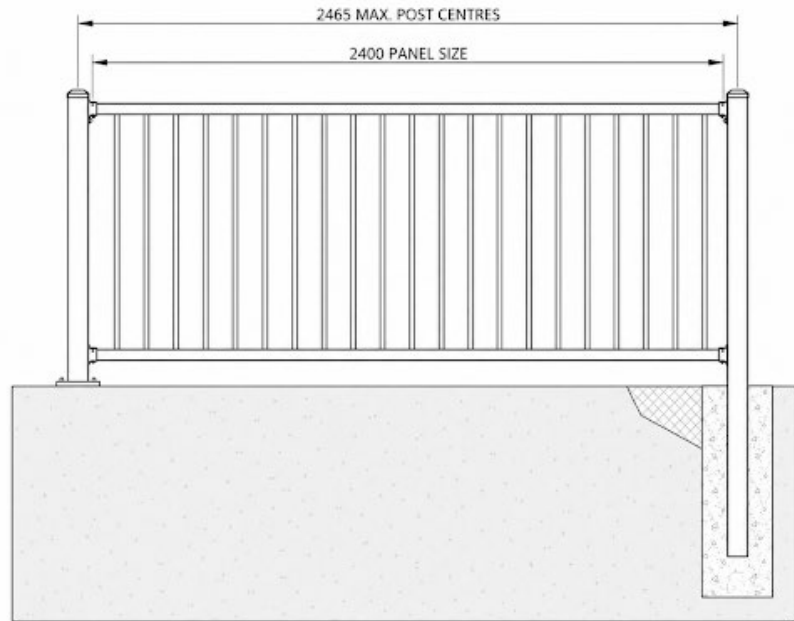


03

Marking and Digging Post Holes

1. Work out the post centres of your new fence:

- Measure the length of your fence panel. It will either be 2.35m L or 2.4m L.
- Measure the width of your post. It will either be 50mm or 65mm. If your fence is a pool fence or balustrade you will need to consult your PS1
- Calculate the post centres by adding the length of the panel + width of the post + 10mm clearance / tolerance. (Panel Length + Post Width + 10mm = Hole Centres)



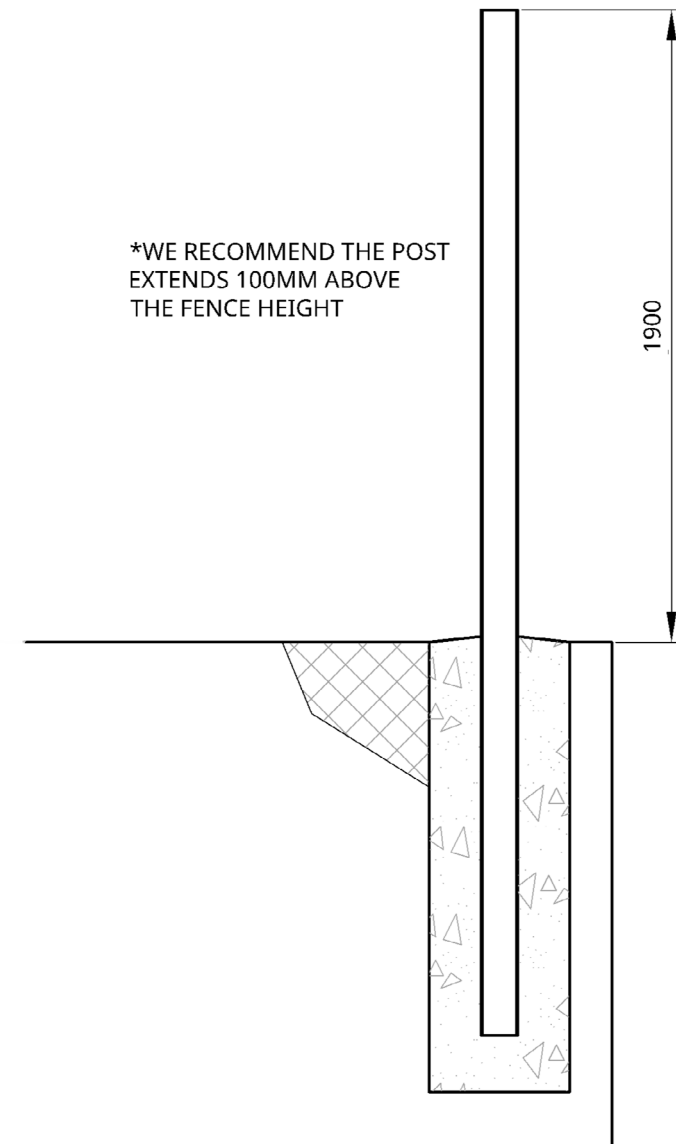
2. Your first post hole should be where you installed your marker peg in step one. Using your tape measure, measure the length of one post centre. This will be where your next post hole should be.
3. Repeat step b for the rest of the fence line. You can reduce the last post centre to be smaller than what was calculated in step a if needed. We recommend that this would be at the end of the fence line that would be less visible.
4. Once you have determined the location of each post, dig the holes to the dimensions recommended below.

Soil Type	Fence Height	Hole Dimensions	Concrete Requirements
Firm Soild/Clay	Up to 1200mm	250 mm Ø x 500 mm D	25kg (1 bag of ready mix)
Firm Soild/Clay	Up to 1500mm	250 mm Ø x 600 mm D	40kg (1.5 bags)
Firm Soild/Clay	Up to 2100mm	300 mm Ø x 700 mm D	50kg (2 bags)
Loose Soil / Sand	Up to 1200mm	300 mm Ø x 550 mm D	40kg (1.5 bags)
Loose Soil / Sand	Up to 1500mm	300 mm Ø x 650 mm D	50kg (2 bags)
Loose Soil / Sand	Up to 2100mm	350 mm Ø x 750 mm D	65kg (2.5 bags)

04

Installing In-ground Posts

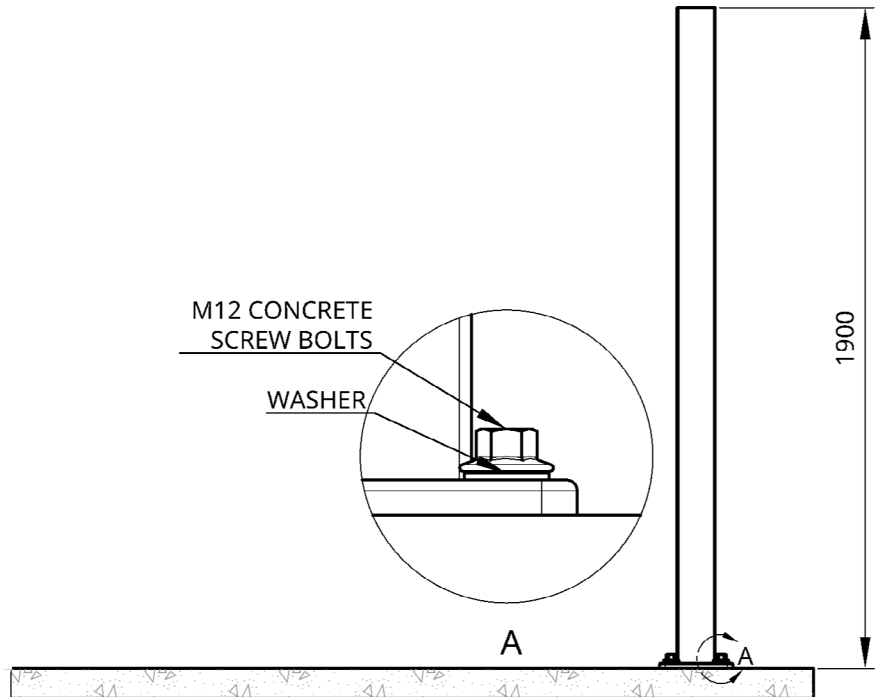
1. Insert the post into the hole and set the height. We recommend that the post is out of the ground 125mm higher than the fence height. This will allow for ground clearance and finer adjustment later.
2. Ensure that the back of the post is flush with the string line installed in step 1.
3. Once the position and height of the post is correct, brace the post using timber. If using a dry mix of concrete, you may not need to brace the post for lower height fences
4. Fill the hole with concrete and regularly check that the post is still plumb using a spirit level and square to the stringline.
5. Repeat steps A-D for all the posts.
6. Once concrete has set remove all braces and clean off any concrete residue.



05

Installing Base Plated / bolt down Posts

1. For installations over existing concrete paths / patios Urban Group can supply posts with a base plate welded to the bottom of the post.
2. Mark out the location of the posts as per step 2a and 2b.
3. Drill 4x M12 holes per post to align with the holes in the base plate.
4. Fix the post down with 4x M10 concrete screw bolts or similar (not supplied) with a minimum of 90mm embedment.
5. Ensure the post is level by packing the underside of the base plate if needed.
6. After the panel has been installed and the post has been trimmed to height, install the post cap by gently taping it on using a rubber mallet.



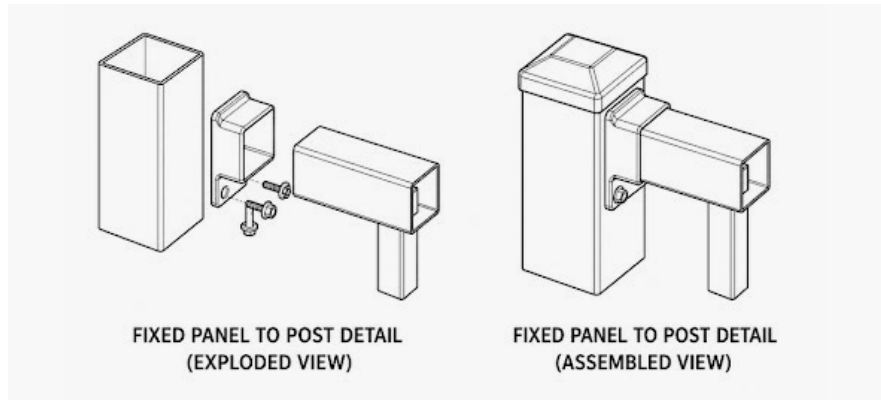
06

Installing the Panels

For the straight & level fence lines, all the posts can be installed & carefully lined up and then the panels can be installed once the concrete has set. This is the quickest & easiest method. For undulating or curved fence lines, panels may need to be installed along with each post and braced until the concrete has set.

NON-RAKING PANELS

1. The non-raking panels are held in place with the standard rail brackets supplied. Slide the bracket onto each rail.
2. Ensure the tab of the bracket is positioned under the top rail, can be either way up on the bottom rail.
3. Fit the panel in place between the posts & check for level.
4. Screw the brackets into the posts with the tek-screws supplied.



RAKING PANELS

1. Raking panels are held in place with the raking rail brackets supplied.
2. Raking brackets need to be fixed to the posts first.
3. Install the top rail bracket at the desired fished fence height by screwing it to the post with the two tek screws supplied.
4. Measure the distance between the two rails, and screw the second rail bracket onto the post at this measurement by screwing it to the post with two tek screws supplied.
5. Repeat step 2. If there are more than 2 horizontal rails on the fence panel.
6. Fit the panel in place & check for level.
7. Screw the panel to the already installed raking bracket using 2x tek screws supplied. into the posts with the tek-screws supplied.

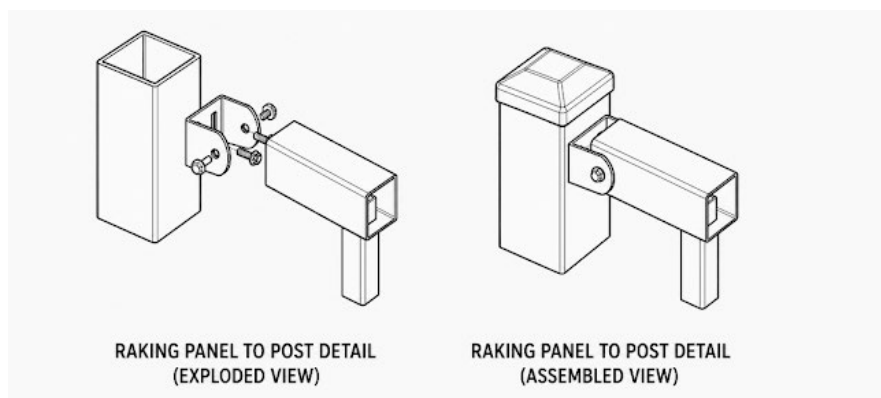
NOTES

When cutting panels or posts to length, use a hacksaw or a power saw with a sharp diamond tip blade, or tungsten tip on aluminium. Do not use a grinder or abrasive cut off wheel as this will burn the powdercoated finish.

Do not leave swarf on the fence as it can rust.

Be careful not to allow the chuck of battery drill to rub on the bracket, this can damage the powdercoated finish.

Take care when handling all components to avoid damage to the powdercoated finish. When cutting steel posts or panels to length, the cut ends must be painted with zinc rich paint to prevent corrosion.



07

Care & Maintenance

Regular cleaning helps preserve the powder coated finish and keeps the fence looking its best. Maintenance frequency should be increased in coastal, geothermal, industrial or other high-exposure environments. Consult our care and maintenance guide for cleaning instructions and advice on the recommended frequency.

For ongoing care and maintenance tips, or to explore compatible accessories, visit Urban Group online or contact our team.

Auckland

71A Patiki Road
Avondale, Auckland
09 394 7250

Wellington

33 Tararua Road
Levin, Manuwatu
06 367 6363

Christchurch

17 Syd Bradley Road
Yaldhurst, Christchurch
03 260 5105

0800 80 3326

sales@urbangroup.co.nz
urbangroup.co.nz