



Installation Guide:

Fresno Aluminium Slat Fence System



Before you begin

Congratulations on purchasing your new Fresno Fence. When installed and maintained correctly, your fence will look great for years to come.

Please read this installation guide carefully before starting.

This guide provides general installation advice and may not cover every site-specific scenario. If you need tailored support, contact the **Urban Group team** on 0800 80 33 26.

Note:

- This guide is not suitable for balustrades or installations requiring fall protection.
- Consult your PS1 and / or Urban Group if your fence is acting as a pool fence or balustrade.
- Discuss special conditions like sloping land, high wind zones, or coastal locations.
- Locate underground utilities before digging.
- Confirm local council boundary fencing regulations.
- Inspect all materials upon delivery and report any damage within 7 days to initiate a freight claim.

01

Tools & Equipment Required

- Tape Measure
- Level
- String Line
- Battery/Impact Drill
- Hammer Drill
- Shovel
- Marker Spray Paint
- Hacksaw / Angle Grinder / Drop Saw (with aluminium cutting blade)

02

Establish the Fence Line

Before installation, identify the legal boundaries of your property and locate all underground services.

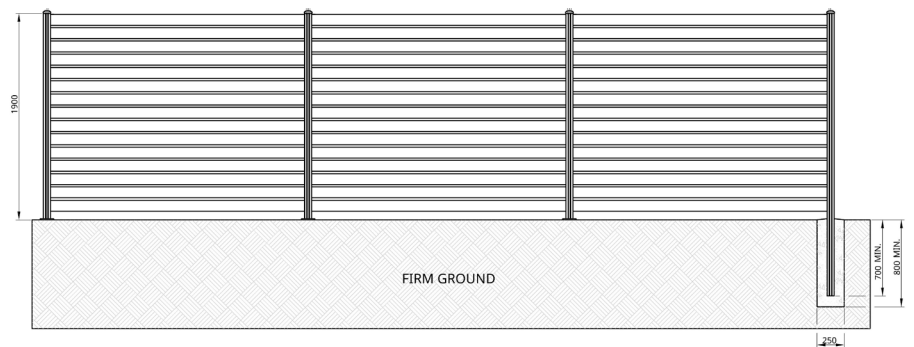
1. Install a marker peg at each end of the fence line.
2. Run a string line between the pegs to ensure a straight fence line. Keep the string line taut and slightly raised off the ground to avoid debris interference.



03

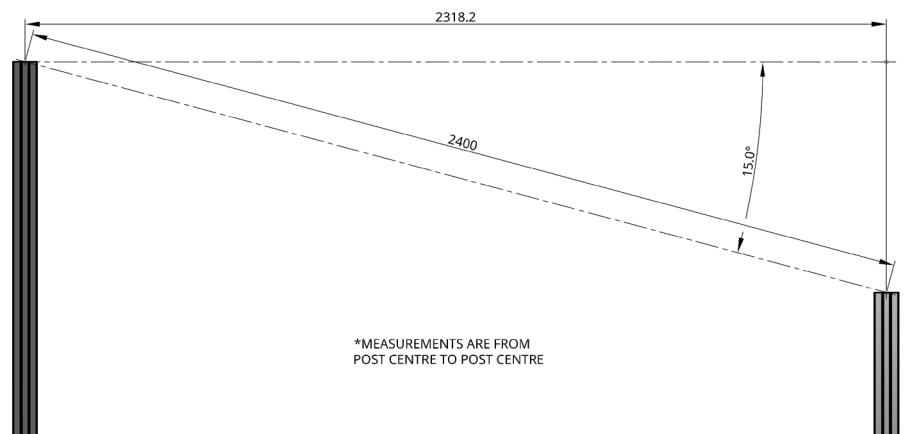
Mark and Dig Post Holes

The Fresno 2.0 panel system is based on 2400mm post centers.



Fence posts at 2400mm centres

1. Your first post hole should align with the initial marker peg.
2. Measure 2400 mm from the first post to mark the second hole with spray paint.
3. Continue marking at 2400 mm intervals along the fence line. Adjust the final post center (if necessary) at the least visible end.
4. For sloping sites or raked panels, reduce post centers as needed.



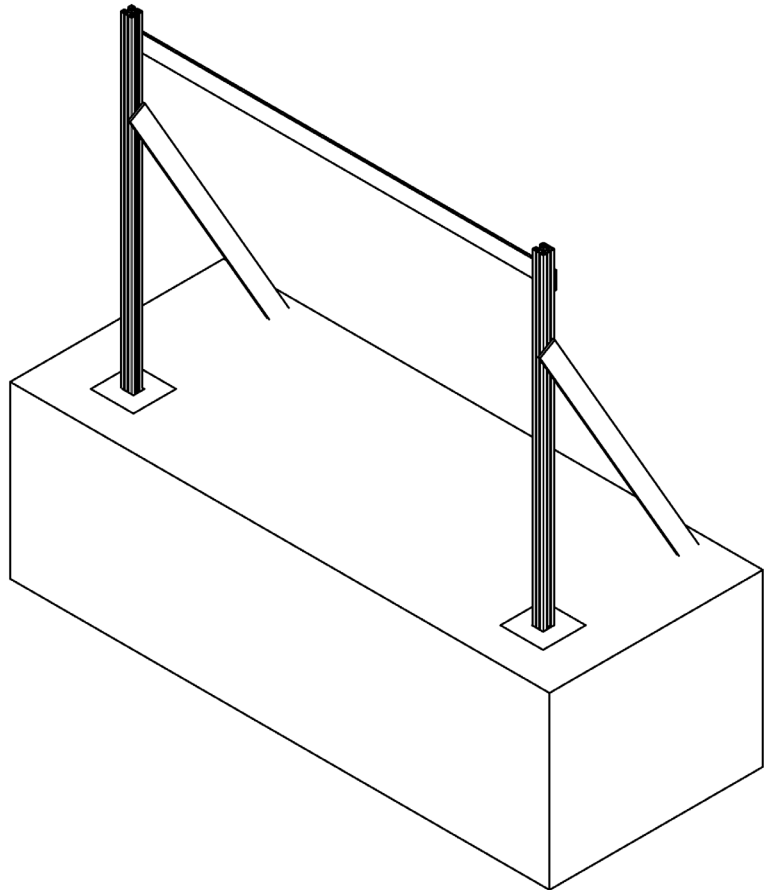
Dig post holes according to the table below:

Soil Type	Fence Height	Hole Dimensions	Concrete Requirements
Firm Soil/Clay	Up to 1200 mm	250 mm Ø x 500 mm D	25 kg (1 bag ready mix)
Firm Soil/Clay	Up to 1800 mm	250 mm Ø x 600 mm D	40 kg (1.5 bags)
Loose Soil/Sand	Up to 1200 mm	300 mm Ø x 550 mm D	40 kg (1.5 bags)
Loose Soil/Sand	Up to 1800 mm	300 mm Ø x 650 mm D	50 kg (2 bags)

04

Install In-Ground Posts

1. Insert the post into the hole and adjust its height. The post should extend 100 mm higher than the final fence height to allow ground clearance.
2. Ensure the post is the same distance from the string line as the others. Avoid touching the line.
3. Brace the post with timber once it's in position. For short fences and dry concrete mix, bracing may not be needed.
4. Fill the hole with concrete. Check the post is plumb and aligned using a level.
5. Repeat for all posts.
6. After the concrete has set, remove the bracing and clean off excess concrete.



Concrete posts in-place & set post height

05

Install Base-Plated / Bolt-Down Posts

1. Use base-plated posts for installation on concrete paths or patios. Standard height is 1900 mm (custom sizes available).
2. Mark post positions as per Section 4.
3. Drill four M12 holes per post to align with the base plate.
4. Secure the post with 4xM12 concrete screw bolts (not supplied) to a depth of at least 90mm.
5. Use packers under the base plate to level the post if necessary.

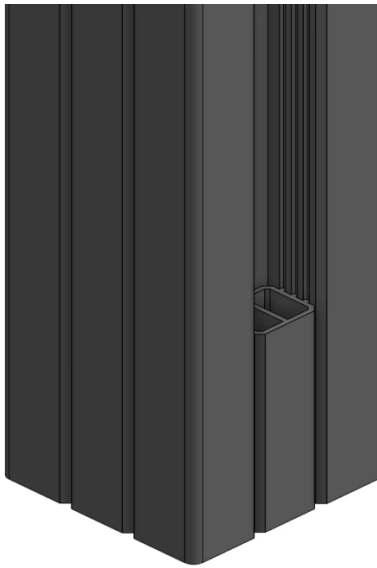


Base plated post exploded view

06

Install the 70 mm Bottom Spacer

1. Determine the fence height by calculating slats and spacers:
 - Slats: 100mm each
 - Standard spacers: 22 mm
 - Pool spacers: 10 mm
 - Example: $15 \times 122 \text{ mm} = 1830 \text{ mm}$ to the top of bottom spacer
2. Mark this point on both end posts and run a string line between them.
3. Insert the 70 mm bottom spacer into each post channel.
4. Align the spacer top with the string line and secure with a 12gx45 mm stainless steel tek screw.



Insert 70mm spacer into channel



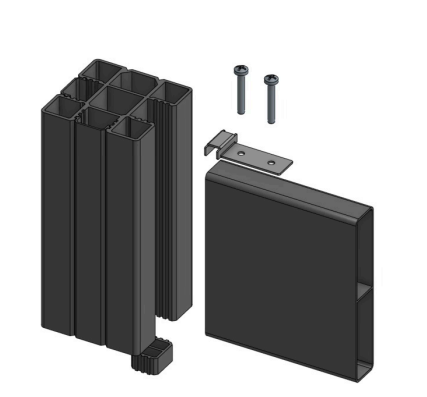
Screw spacer to post

07

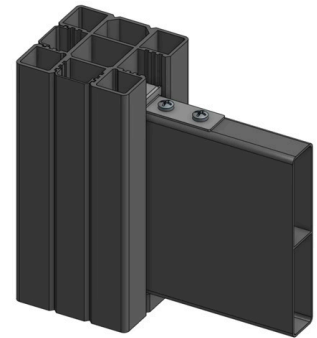
Install Slats and Spacers

1. Slide the first slat down into the post channels until it rests on the bottom spacer.
2. Insert one 22 mm spacer into each post channel so it rests on the slat.
3. Continue alternating slats and spacers until the desired height is reached.
4. After placing the final slat, install the L-clip on top of it. Secure the L-clip with two 8gx25 mm self-drilling screws.
5. Insert the final two spacers on top of the L-clip.
6. If needed, trim the top of the post so it sits no more than 25 mm above the top slat. Leave a minimum 15 mm gap between the slat and the post cap.
7. Gently tap the aluminium post cap into place with a soft rubber mallet.
8. Be careful not to strike too hard to avoid splitting the cap.

Exploded view



Assembled View



Your Fresno 2.0 fence
is now installed!

For ongoing care and maintenance tips, or to explore compatible accessories, visit Urban Group online or contact our team.

0800 80 33 26

urbangroup.co.nz